

UVC GERMICIDAL
ULTRAVIOLET
CHAMBER

SV/FILTER-CG

AIR PURIFYING UNITS WITH UVC
GERMICIDAL CHAMBER

- UVC GERMICIDAL CHAMBER
- DIFFERENT STAGES OF FILTRATION
- IN-LINE FOR DUCT INSTALLATION
- IDEAL FOR RETAIL AND OTHER PREMISES
- LOW NOISE LEVEL



FILTRATION STAGE



SV/FILTER-CG

Air purifying units, with UVc germicidal chamber, in-line for duct installation and with different stages of filtration



F7 + F9

Characteristics:

- Built-in UVc germicidal chamber.
- Acoustic casing of sound absorbing material.
- Standard flanges at intake and discharge sides for easy in-duct installation.
- F7 + F9 filters.
- Quick access inspection cover for cleaning and maintenance.

Casing:

- Galvanized steel sheet casing.
- Backward curved impellers, except for models 125 and 150 which have multi-bladed impellers. Supplied with four support feet for easy mounting.
- Access doors to facilitate maintenance and cleaning.

Motor:

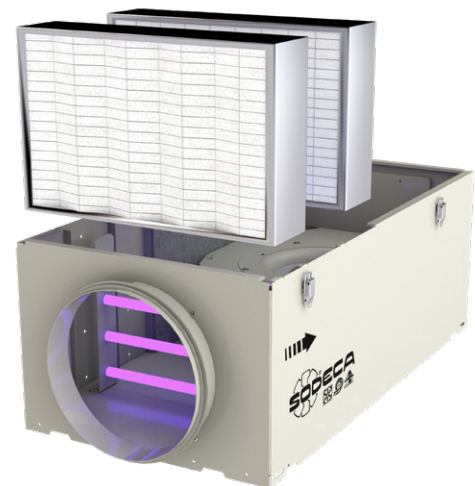
- External rotor motors, with built-in thermal protector, class F, with ball bearings, IP-54 protection.
- Single phase 230V. -50 / 60Hz. Adjustable.
- Maximum temperature of transported air + 50°C.

Finish:

- Anticorrosive in polyester resin polymerised at 190 °C, after degreasing with phosphate-free nanotechnological treatment.

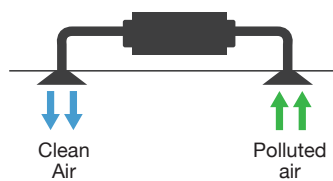
On request:

- Alternative filtration stages: G4 + F6 and F6 + F8.
- Automatic control system.



Application examples

Indoor air purification

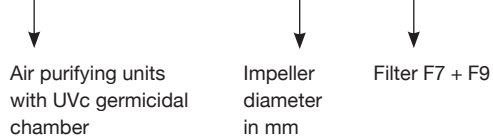


Collection and purification of outdoor air



Order code

SV/FILTER/CG – 200/H – F7+F9



Filters characteristics

Filters	EN 779 Em	EN 1822	ISO 16890			
			ISO ePM ₁	ISO ePM _{2,5}	ISO ePM ₁₀	ISO COARCE
G4	90%	-	-	-	-	>90%
F7	90%	-	>50%	>65-95%	>85%	-
F9	95%	-	>80%	>95%	>95%	-
HEPA H14	-	>99,995%	-	-	-	-

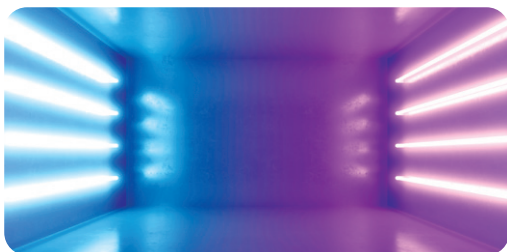
Technical characteristics

Model	Recommended effective working area (m ²)	Speed (r/min)	Maximum admissible current (A)	Maximum flow (m ³ /h)			Weight (kg)
				230V	Standard Filters (F7 + F9)	Filters on request (G4 + F6)	
SV/FILTER-CG-200/H	40	1240	0,65	375	590	430	15,4
SV/FILTER-CG-250/H	60	2380	1,25	525	660	560	18,1
SV/FILTER-CG-315/H	80	1330	0,85	790	1035	850	26,7
SV/FILTER-CG-350/H	120	1280	0,95	1180	1550	1270	36,6
SV/FILTER-CG-400/H	160	1330	1,8	1600	2050	1720	46,7

* Recommended area with F7 + F9 filters, and with a 3-meter high room.

Technical characteristics of the UVc germicidal chamber

These purification units integrate a germicidal chamber, built on the basis of UV "C" ultraviolet lamps in a spectrum of 256nm, wave amplitude indicated to inactivate a wide variety of microorganisms by absorbing short wavelength energy through DNA and RNA. For specific types of viruses or bacteria that are affected by the radiation dose from the germicidal chamber, consult the specific document.



Model	Number of lamps	Total electrical power (W)	Total radiation power UVc (W)	Radiation dose* (mJ/cm ²)
SV/FILTER-CG-200/H	4	44	45	5,3
SV/FILTER-CG-250/H	4	44	45	4,7
SV/FILTER-CG-315/H	4	100	112	8,4
SV/FILTER-CG-350/H	4	100	112	6,2
SV/FILTER-CG-400/H	4	100	112	5,1

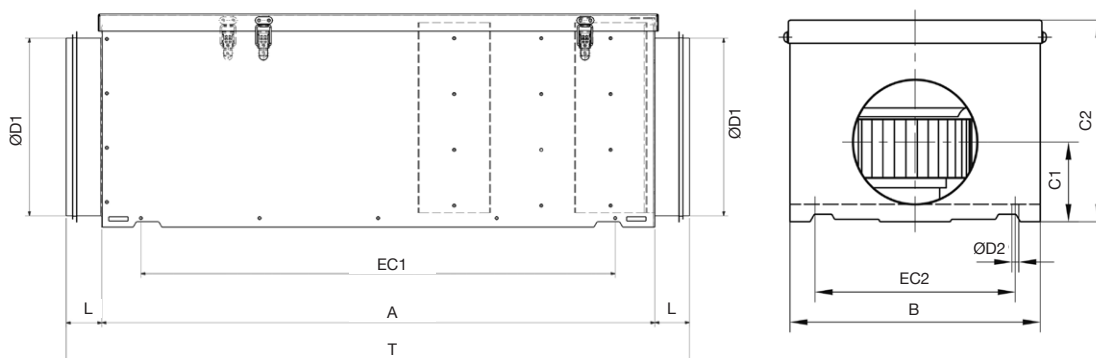
* Minimum dose calculated based on flow with F7 + F9 filters



Erp. (Energy Related Products)

Information on Directive 2009/125 / EC downloadable from the SODECA website or QuickFan selection program.

Dimensions mm



Model	A	B	C1	C2	ØD1	L	ØD2	EC1	EC2	T
SV/FILTER-CG-200/H	775	395	117	273	200	36	7	725	345	847
SV/FILTER-CG-250/H	775	395	140	293	250	50	7	725	345	875
SV/FILTER-CG-315/H	860	520	175	371	315	48	8,5	809	469	956
SV/FILTER-CG-350/H	960	610	200	410	355	48	8,5	909	564	1056
SV/FILTER-CG-400/H	1035	670	219	455	400	38	8,5	984	624	1111

Curve characteristic

Equipment curve with standard built-in filters

3 F7+F9

Equipment curve with alternative filters

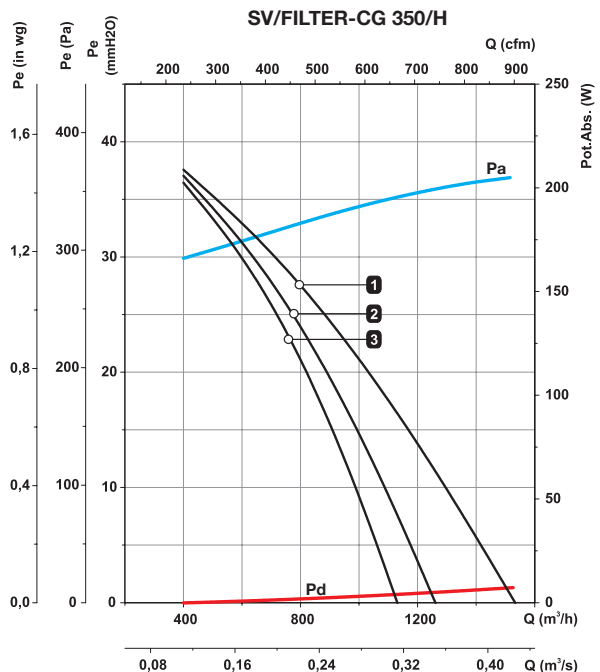
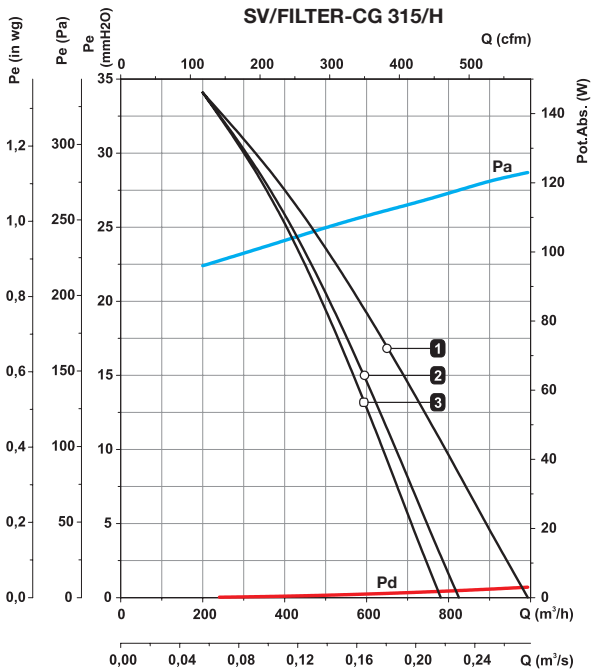
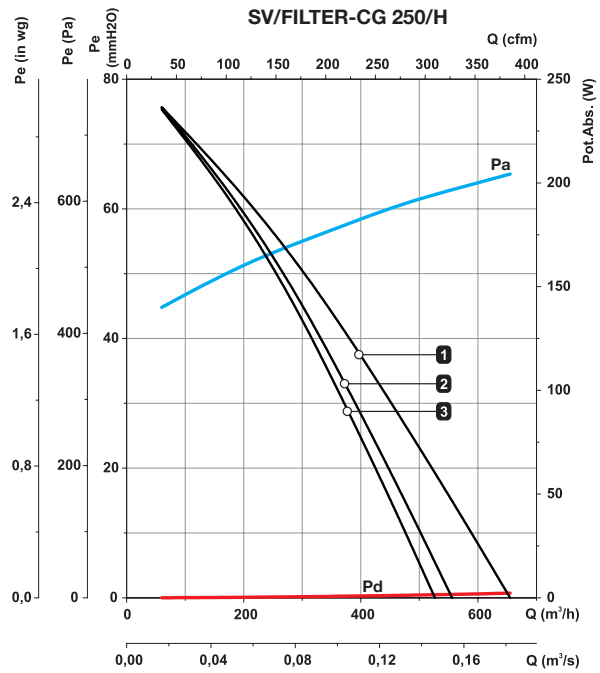
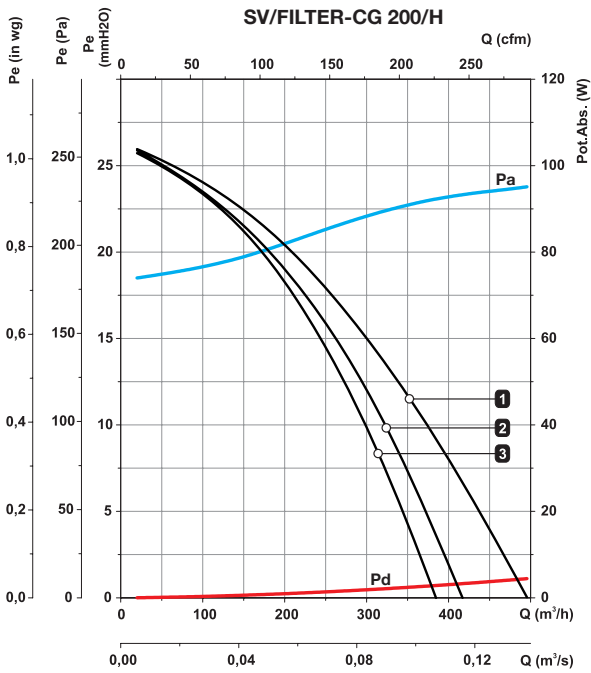
1 G4+F6

2 F6+F8

Static pressure

Dynamic Pressure

Absorbed power



Curve characteristics

Equipment curve with standard built-in filters

3 F7+F9

Equipment curve with alternative filters

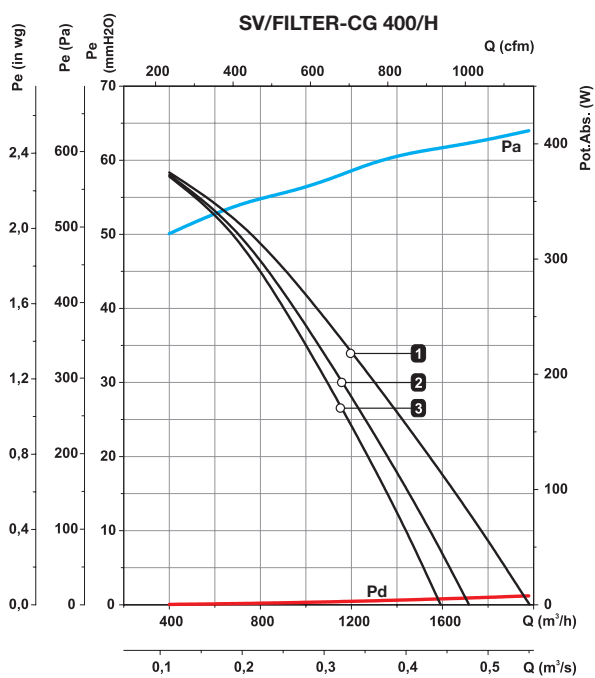
1 G4+F6

2 F6+F8

Static pressure

Dynamic Pressure

Absorbed power



Accessories



FILTERS



C-JFILTER



SI-PRESSURE SWITCH



SI-PRESSURE



SI-MF



SI-CO2 IND



PRESSURE PROBE



INT

**HEADQUARTERS****Sodeca, S.L.U.**

Pol. Ind. La Barricona
Carrer del Metall, 2
E-17500 Ripoll
Girona, SPAIN
Tel. +34 93 852 91 11
Fax +34 93 852 90 42
General sales: comercial@sodeca.com
Export sales: ventilation@sodeca.com

PRODUCTION PLANT**Sodeca, S.L.U.**

Ctra. de Berga, km 0,7
E-08580 Sant Quirze de Besora
Barcelona, SPAIN
Tel. +34 93 852 91 11
Fax +34 93 852 90 42
General sales: comercial@sodeca.com
Export sales: ventilation@sodeca.com

**EUROPE****FINLAND****Sodeca Finland, Oy**

HUITTINEN
Sales and Warehouse
Mr. Kai Yli-Sipilä
Metsälinnankatu 26
FI-32700 Huittinen
Tel. + 358 400 320 125
orders.finland@sodeca.com

HELSINKI
Smoke Control Solutions
Mr. Antti Kontkanen
Vilppulantie 9C
FI-00700 Helsinki
Tel. +358 400 237 434
akontkanen@sodeca.com

HYVINKÄÄ
Industrial Applications
Mr. Jaakko Tomperi
Niinistökatu 12
FI-05800 Hyvinkää
Tel. +358 451 651 333
jtomperi@sodeca.com

ITALIA**Marelli Ventilazione, S.R.L.**

Sr. Christian Tosetti
Viale del Lavoro, 28
37036 San Martino B.A.
(VR), ITALY
Tel. +39 045 87 80 140
Fax +39 045 99 22 24
info@marelliventilazione.com

PORTUGAL**Sodeca Portugal, Unip. Lda.**

PORTO
Rua Veloso Salgado 1120/1138
4450-801 Leça de Palmeira
Tel. +351 229 991 100
geral@sodeca.pt

LISBOA
Pq. Emp. da Granja Pav. 29
2625-607 Vialonga
Tel. +351 219 748 491
geral@sodeca.pt

ALGARVE
Rua da Alegria S/N
8200-557 Cortesões
Tel. +351 289 092 586
geral@sodeca.pt

UNITED KINGDOM**Sodeca Fans UK, Ltd.**

Mr. Mark Newcombe
Tamworth Enterprise Centre
Philip Dix House, Corporation
Street, Tamworth, B79 7DN
UNITED KINGDOM
Tel. +44 (0) 1827 216 109
sales@sodeca.co.uk

AMERICA**CHILE****Sodeca Ventiladores, SpA.**

Sra. Sofia Ormazábal
Santa Bernardita 12.005
(Esquina con Puerta Sur)
Bodegas 24 a 26,
San Bernardo, Santiago, CHILE
Tel. +56 22 840 5582
ventas.chile@sodeca.com

COLOMBIA**Sodeca Latam, S.A.S.**

Sra. Luisa Stella Prieto
Calle 7 No. 13 A-44
Manzana 4 Lote 1, Montana
Mosquera, Cundinamarca
Bogotá, COLOMBIA
Tel. +57 1 756 4213
ventascolombia@sodeca.co

PERU**Sodeca Perú, S.A.C.**

Sr. Jose Luis Jiménez
C/ Mariscal Jose Luis de
Orbegoso 331. Urb. El pino.
15022, San Luis. Lima, PERÚ
Tel. +51 1 326 24 24
Cel. +51 994671594
comercial@sodeca.pe

RUSSIA**Sodeca, L.L.C.**

Mr. Stanislav Alifanov
Severnoye Shosse, 10 room 201
Business Park Plaza Ramstars
140105 Ramenskoye,
Moscow region, RUSSIA
Tel. +7 495 955 90 50
alifanov@sodeca.com



www.sodeca.com

