

# SOLUTIONS FOR SMOKE EXHAUST IN REFRIGERATED ROOMS

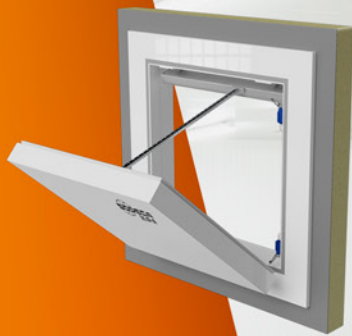
HIGH PERFORMANCE IN  
TERMS OF WATER-TIGHTNESS  
AND INSULATION

SUITABLE FOR  
TEMPERATURES  
UP TO -28°C

OPERATIONAL  
RELIABILITY EXCEEDING  
11,000 CYCLES

## Certified in accordance with EN 12101-3

Tested with hatch and extract fan for smoke exhaust  
in accordance with test 21/32306-460



IN ACCORDANCE WITH  
STANDARD EN 12101-3

EXTRACT FANS FOR SMOKE  
EXHAUST AND MOTORISED HATCHES

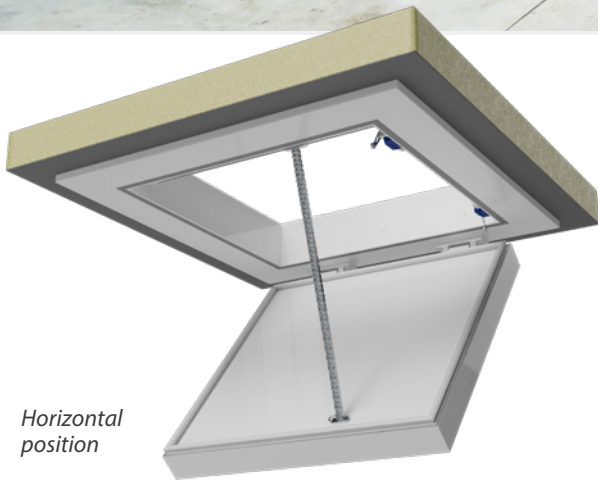


# FRIDGE/FLAP

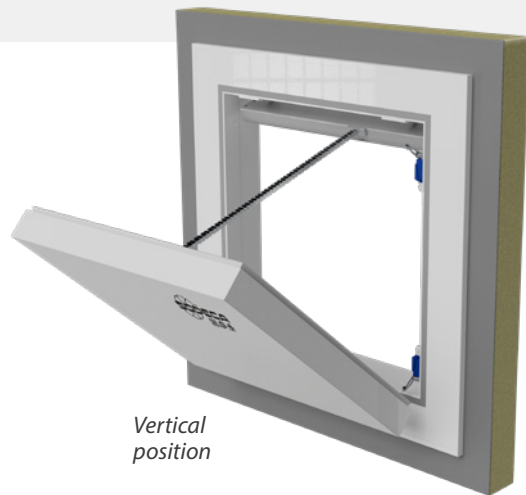
Motorised hatches **certified** for installations with smoke exhaust extract fans in **refrigerated rooms**



IN ACCORDANCE WITH STANDARD EN 12101-3



Horizontal position



Vertical position

## Certified in accordance with EN 12101-3

Tested with hatch and extract fan for smoke exhaust in accordance with test 21/32306-460

**11,000**  
CYCLES

### RELIABILITY

Chain actuator with an operational reliability exceeding 11,000 cycles with a 30 second open and close time.



### OPENING

Motorised opening with a manual opening system in case of a malfunction (Utility model ES 1 259 375 U).



### INDICATIONS

Limit switches with voltage free contacts for monitoring whether the hatch is open or closed.



## INSULATION

The mobile sheet is manufactured in lacquered sheet steel with expanded and press injected polyurethane, class B in accordance with UNE-EN 13501, with a total insulation thickness of 90 mm.

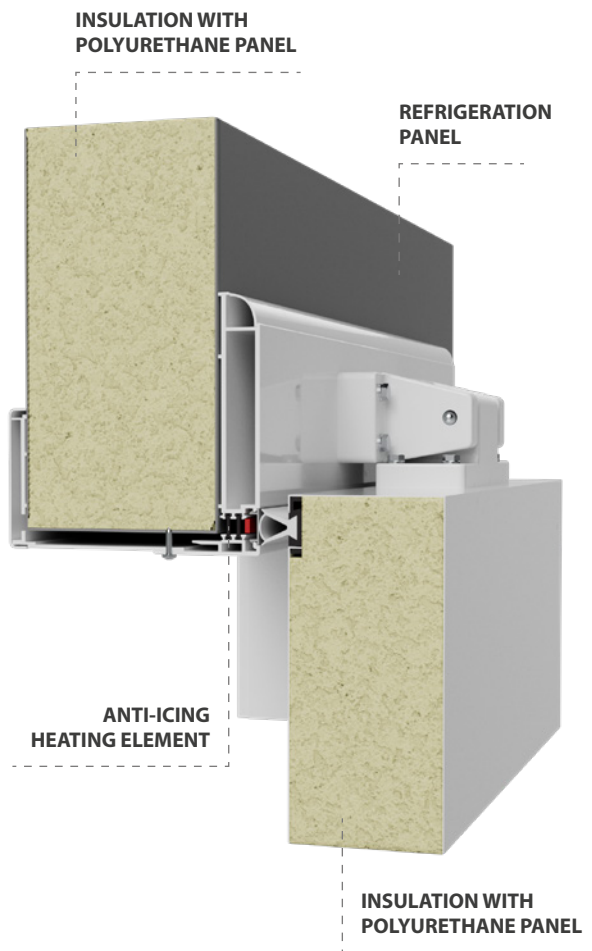
The perimeter profiles of the mobile sheet as well as the fixed frame are made of aluminium and are equipped with a thermal bridge break.

This way, thermal transmittance is reduced to 0.2 W/m<sup>2</sup>·K.



## Certified in accordance with EN 12101-3

Tested with hatch and  
extract fan for smoke  
exhaust in accordance with  
test 21/32306-460



## WATER-TIGHTNESS

The dual air chamber perimeter seal provides a Class D water-tightness in accordance with EN 12207.



## ANTI-ICING

To prevent icing of the water-tight seal and a subsequent blocking of the hatch, the frame is equipped with a 40 W/m perimeter heating element to prevent ice from building up.



## INSTALLATION

Suitable for cold rooms (>4 °C) and freezing rooms (between 4 °C and -28 °C).



**Certified extract fans  
in accordance with EN 12101-3**



## APPLICATIONS FOR SMOKE EXHAUST IN **REFRIGERATION ROOMS**

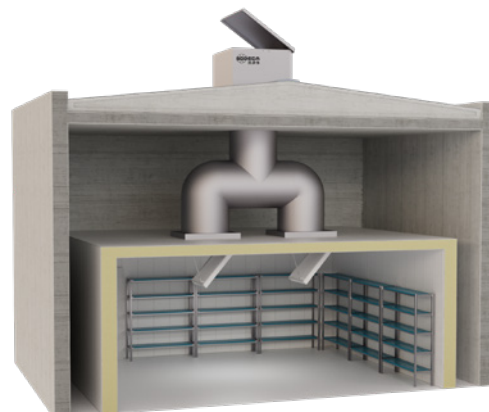
When doing the math regarding smoke extract fans, a high number of exhaust points but an exhaust flow achievable by a single extract fan are usually required. **This way, the cost of the extract system is reduced by adjusting the number of extract fans and extraction points.**



SMOKE EXHAUST  
**DRIVEN**  
FROM THE REFRIGERATION ROOM

**With roof mounted extract fan with a high thermal insulation THT/HATCH**

Installations with an outer roof requiring a high thermal insulation of the smoke extract fan. Using this combination we are able to achieve a full sealing against rainwater and an optimal thermal insulation, and it also enables routing the smoke from one or more exhaust points.



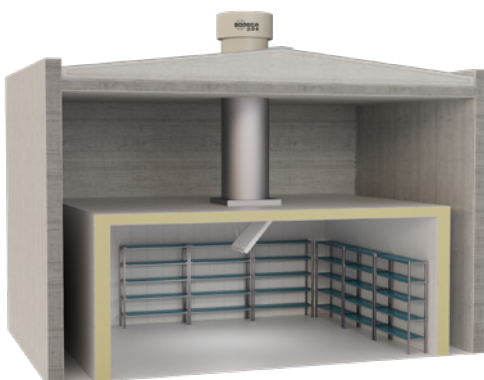




SMOKE EXHAUST  
**DRIVEN**  
 FROM THE REFRIGERATION ROOM

**Roof mounted extract fan  
 with vertical exhaust THT/ROOF**

Installations with an outer roof and not requiring a high thermal insulation of the smoke extract fan. Using this combination we are able to achieve a full sealing against rainwater and it also enables routing the smoke from one or more exhaust points.



SMOKE EXHAUST  
**VIA PLENUM**

**With roof mounted extract fan  
 with horizontal HTMF exhaust**

Installations with an outer roof and not requiring a high thermal insulation of the smoke extract fan. Using this combination we are able to achieve a full sealing against rainwater and the room or plenum smoke exhaust are compatible.





**Certified extract fans  
in accordance with EN 12101-3**



## APPLICATIONS FOR SMOKE EXHAUST IN **REFRIGERATION ROOMS**



**DIRECT**  
SMOKE EXHAUST  
FROM THE REFRIGERATION ROOM

**With roof mounted extract fan with a  
high thermal insulation THT/HATCH**

Installations where the refrigeration room is not equipped with an exterior roof; in this case, the smoke exhaust fan can be installed directly to the extract point. Using this combination we are able to achieve a full sealing against rainwater as well as an optimum thermal insulation.

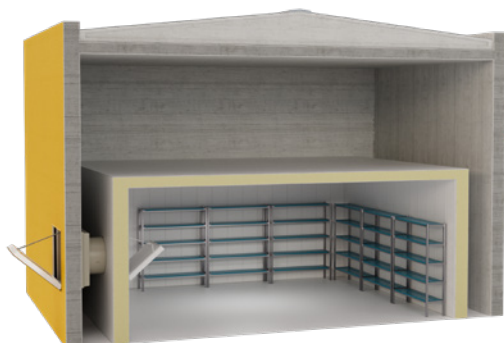




SMOKE EXHAUST  
**DRIVEN**  
 FROM THE REFRIGERATION ROOM

**With wall mounted extract fan with a high thermal insulation THT/WALL**

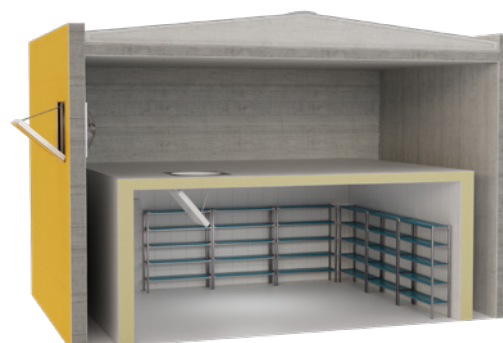
Installations where it is preferred that the smoke be exhausted through a building wall and where a high thermal insulation of the exterior enclosure is required. Using this combination we are able to achieve an optimal thermal insulation and it also enables routing the smoke from one or more exhaust points.



SMOKE EXHAUST  
**VIA PLENUM**

**With wall mounted extract fan with a high thermal insulation THT/WALL-F**

Installations where it is preferred that the smoke be exhausted through a building wall and where a high thermal insulation of the exterior enclosure is required. Using this combination we are able to achieve an optimal thermal insulation and the room or plenum smoke exhaust are compatible.



**HEADQUARTERS****Sodeca, S.L.U.**

Pol. Ind. La Barricona  
Carrer del Metall, 2  
E-17500 Ripoll  
Girona, SPAIN  
Tel. +34 93 852 91 11  
Fax +34 93 852 90 42  
General sales: comercial@sodeca.com  
Export sales: ventilation@sodeca.com

**PRODUCTION PLANT****Sodeca, S.L.U.**

Ctra. de Berga, km 0,7  
E-08580 Sant Quirze de Besora  
Barcelona, SPAIN  
Tel. +34 93 852 91 11  
Fax +34 93 852 90 42  
General sales: comercial@sodeca.com  
Export sales: ventilation@sodeca.com

**EUROPE****FINLAND****Sodeca Finland, Oy**

HUITTINEN  
Sales and Warehouse  
Mr. Kai Yli-Sipilä  
Metsälinnankatu 26  
FI-32700 Huittinen  
Tel. + 358 400 320 125  
orders.finland@sodeca.com

HELSINKI  
Smoke Control Solutions  
Mr. Antti Kontkanen  
Vilppulantie 9C  
FI-00700 Helsinki  
Tel. +358 400 237 434  
akontkanen@sodeca.com

HYVINKÄÄ  
Industrial Applications  
Mr. Jaakko Tomperi  
Niinistökatu 12  
FI-05800 Hyvinkää  
Tel. +358 451 651 333  
jtomperi@sodeca.com

**ITALIA****Marelli Ventilazione, S.R.L.**

Viale del Lavoro, 28  
37036 San Martino B.A.  
(VR), ITALY  
Tel. +39 045 87 80 140  
vendite@sodeca.com

**PORTUGAL****Sodeca Portugal, Unip. Lda.**

PORTO  
Rua Veloso Salgado  
1120/1138  
4450-801 Leça de Palmeira  
Tel. +351 229 991 100  
geral@sodeca.pt

LISBOA  
Pq. Emp. da Granja Pav. 29  
2625-607 Vialonga  
Tel. +351 219 748 491  
geral@sodeca.pt

ALGARVE  
Rua da Alegria, 33  
8200-569 Ferreiras  
Tel. +351 289 092 586  
geral@sodeca.pt

**UNITED KINGDOM****Sodeca Fans UK, Ltd.**

Mr. Mark Newcombe  
Tamworth Enterprise Centre  
Philip Dix House, Corporation  
Street, Tamworth, B79 7DN  
UNITED KINGDOM  
Tel. +44 (0) 1827 216 109  
sales@sodeca.co.uk

**AMERICA****CHILE****Sodeca Ventiladores, SpA.**

Sra. Sofia Ormazábal  
Santa Bernardita 12.005  
(Esquina con Puerta Sur)  
Bodegas 24 a 26,  
San Bernardo, Santiago, CHILE  
Tel. +56 22 840 5582  
ventas.chile@sodeca.com

**COLOMBIA****Sodeca Latam, S.A.S.**

Sra. Luisa Stella Prieto  
Calle 7 No. 13 A-44  
Manzana 4 Lote 1, Montana  
Mosquera, Cundinamarca  
Bogotá, COLOMBIA  
Tel. +57 1 756 4213  
ventascolombia@sodeca.com

**PERU****Sodeca Perú, S.A.C.**

Sr. Jose Luis Jiménez  
C/ Mariscal Jose Luis de  
Orbegoso 331. Urb. El pino.  
15022, San Luis. Lima, PERÚ  
Tel. +51 1 326 24 24  
Cel. +51 994671594  
comercial@sodeca.pe

**RUSSIA****Sodeca, L.L.C.**

Mr. Stanislav Alifanov  
Severnoye Shosse, 10 room 201  
Business Park Plaza Ramstars  
140105 Ramenskoye,  
Moscow region, RUSSIA  
Tel. +7 495 955 90 50  
alifanov@sodeca.com



[www.sodeca.com](http://www.sodeca.com)

